



Paulmann

IP 20



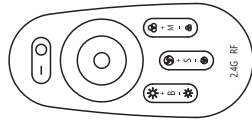
Info

www.paulmann.com

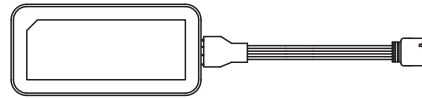
Paulmann Licht GmbH
Quezinger Feld 2
31832 Springe
Germany

www.paulmann.com

Art.-Nr.: 797.97
PPN 07/22



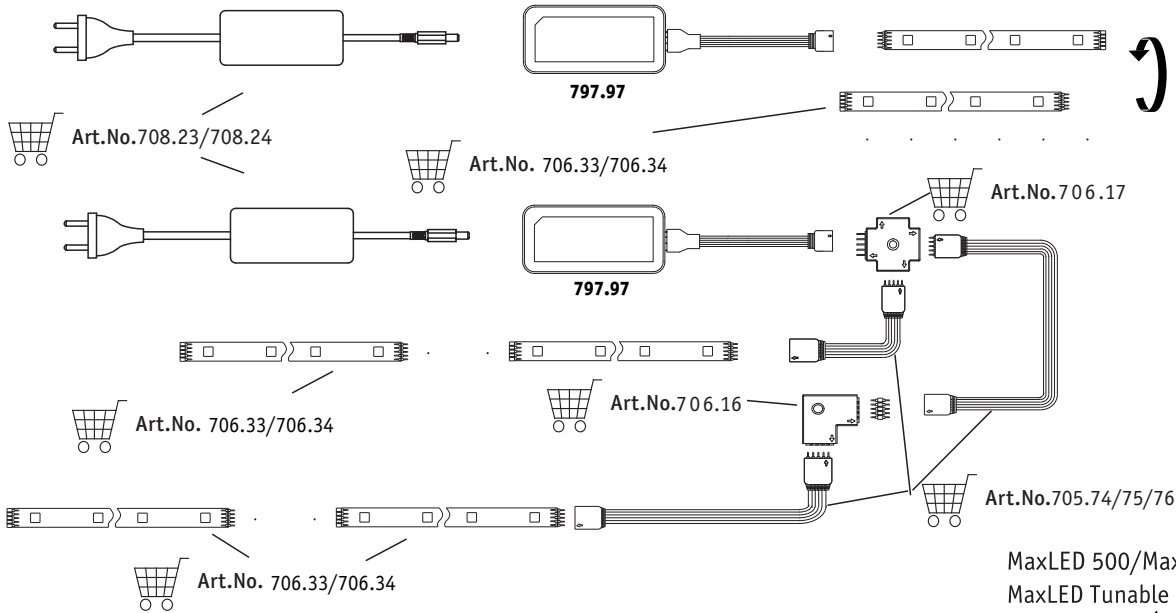
1X



1X

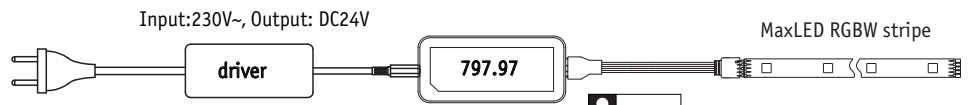
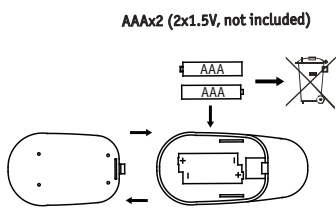


A



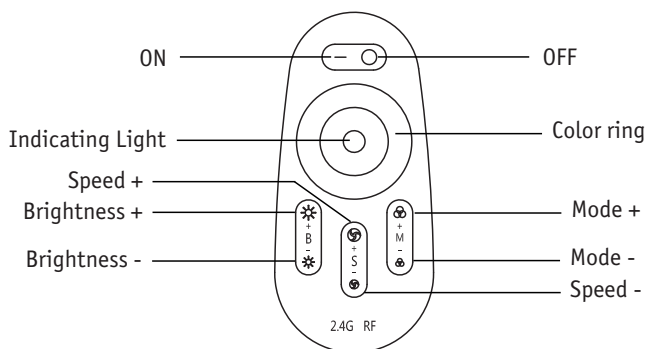
- MaxLED 500/MaxLED 1000 ✗
- MaxLED Tunable White ✗
- MaxLED RGB ✗
- MaxLED RGBW ✓

B



- max.30m
- 20W driver + 797.97 controller ➔ max. expandable stripe 1.3m
- 36W driver + 797.97 controller ➔ max. expandable stripe 2.5m
- 60W driver + 797.97 controller ➔ max. expandable stripe 4.8m
- 75W driver + 797.97 controller ➔ max. expandable stripe 6.8m
- 80W driver + 797.97 controller ➔ max. expandable stripe 7.6m
-

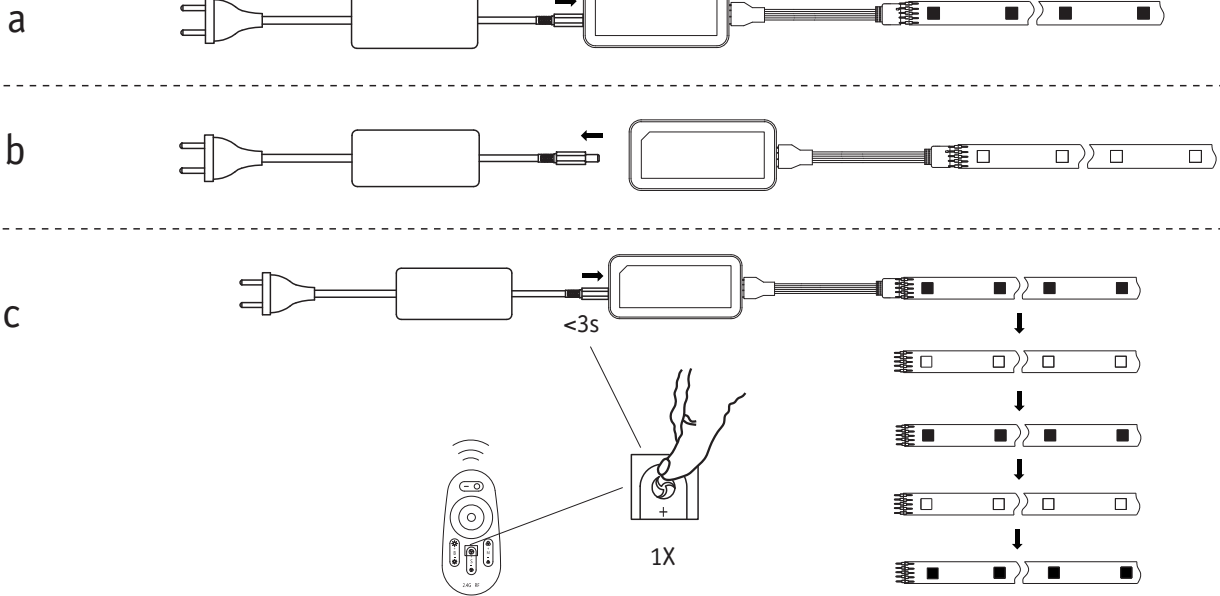
Function of keys



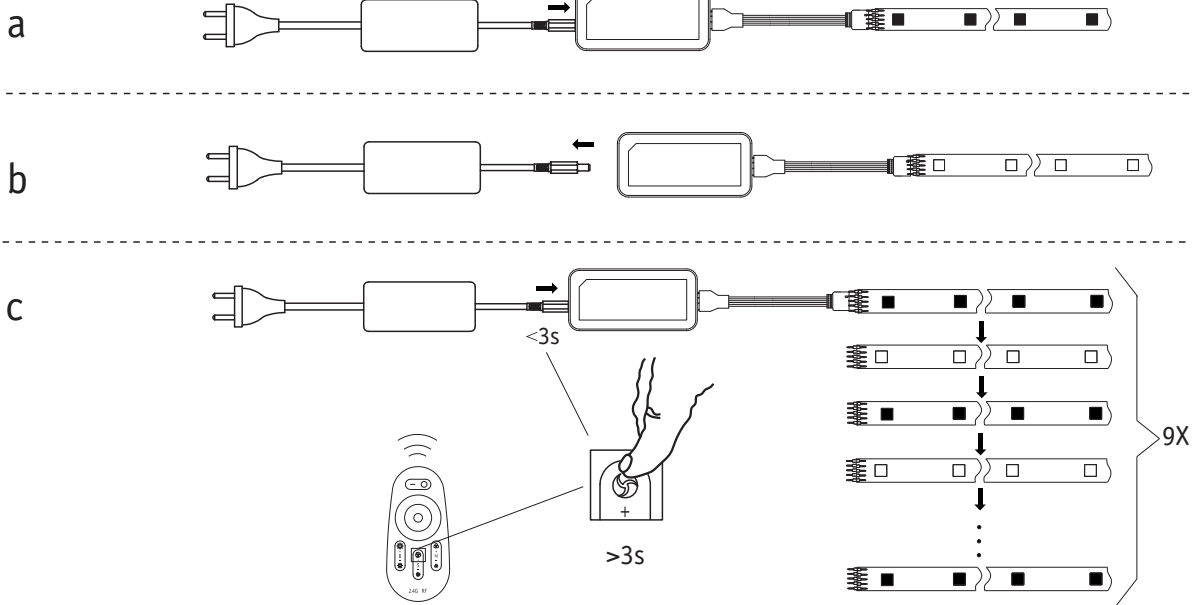
Mode

Number	Mode	Brightness state	Speed state	Remark
1	Static color	Adjustable	Unadjustable	Choose any color by touching the color ring
2	Static white color	Adjustable	Unadjustable	White only
3	Color/ white static coexist	Adjustable	Unadjustable	Color ring free to choose, Brightness adjusts only for color light
4	All colors gradual change	Adjustable	Adjustable	White (off)
5	Four colors gradual change	Adjustable	Adjustable	
6	Four colors jump to change	Adjustable	Adjustable	
7	Seven colors jump to change (with white color)	Adjustable	Adjustable	
8	Red/white jumps to change	Adjustable	Adjustable	
9	Blue/white jumps to change	Adjustable	Adjustable	
10	Green/white jumps to change	Adjustable	Adjustable	
11	Red jumps to change	Adjustable	Adjustable	
12	Blue jumps to change	Adjustable	Adjustable	
13	Green jumps to change	Adjustable	Adjustable	
14	White jumps to change	Adjustable	Adjustable	
15	Circulation mode	Adjustable	Unadjustable	all the modes cycle

Code Matching



Code Clearing



Zugelassen für den Betrieb in allen Ländern der EU / Approved for operating in all European countries

CE: Konform mit / in accordance with /conformement a 2014/30/EU, 2014/53/EU

<http://www.paulmann.com/de/de/b2b-haendler-log-in.html>

2,4 GHz -
2,4835 GHz



doesn't apply for the geographical area within a radius of 20km from the centre on "Ny Alesund"

Hiermit erklärt Paulmann Licht, dass der Funkanlagentyp Art.-Nr.: 797.97 der Richtlinie 2014/53/EU entspricht. Der vollständige Text der EU-Konformitätserklärung ist unter der folgenden Internetadresse verfügbar: www.paulmann.com/ce
Funk-Frequenz :2.4GHz-2.4835GHz Abgestrahlte Energie :10mW